

Qa

ALLUVIUM (Recent) -- Unconsolidated boulders, cobbles, pebbles, sand, and clay of varied composition.

Tv

VOLCANIC ROCKS UNDIVIDED (Tertiary) -- Volcanic rocks of varied composition.

TKnh

NORTH HORN FORMATION (Cretaceous - Tertiary) -- Conglomerate with Paleozoic and Mesozoic sedimentary cobbles and pebbles in a red to gray matrix; pink micritic dolomites and limestones at the top with interbedded fine-grained, pink sandstones and white bentonitic shales; no volcanic cobbles; 550± m thick.

UNCONFORMITY

Jn

NAVAJO SANDSTONE (Jurassic) -- Brick red to white, fine-grained, crossbedded, massive sandstone; 100% quartz, frosted grains; 345 m thick.

UNCONFORMITY

CHINLE FORMATION (Triassic)

Rcu

UPPER MEMBER -- Maroon, red, purple, and green siltstones and shales; very thin bedded; abundant calcite nodules; forms soil-and rubble-covered slope; 21 m thick.

Rcs

SHINARUMP CONGLOMERATE MEMBER -- Light brown, fluvial sandstone, gritstone, and pebble conglomerate; grains and clasts of quartz, quartzite, and chert; forms rounded ledges and cliffs; petrified wood; 97.5 m thick.

UNCONFORMITY

Rm

MOENKOPI FORMATION (Triassic) -- Red and green, thin-bedded siltstones and shales; ripplemarks, crossbeds, and mudcracks; Base: fossiliferous, greenish gray limestone unit contains abundant Meekoceras ammonoids. Middle: fossiliferous, gray limestones contain Pentacrinus whitei; 646.5 m thick.

UNCONFORMITY

Pk

KAIBAB LIMESTONE (Permian) -- Base: medium to light gray, fine-grained, cherty dolomite; medium to thin bedded, few fossils. Middle: medium gray to brown, coarse-grained, cherty, fossiliferous limestone; brachiopods, sponges, bryozoans, and crinoids. Upper: medium gray to brown, sandy dolomites, dolomitic sandstones, and chert; no fossils; 353 m thick.

UNCONFORMITY

Pq

QUEANTOWEAP SANDSTONE (Permian) -- Varigated pink, purple, orange brown, brown, gray, and white, fine-grained sandstone; clean with well-rounded grains; forms blocky talus-covered slopes with few ledges; 249 m thick.

UNCONFORMITY

Pp

PAKOON DOLOMITE (Permian) -- Pinkish brown to medium grayish brown, fine-grained dolomite; some minor chert; clear calcite blebs and nodules; basal conglomerate with corals in chert cobbles; 135.5 m thick.

UNCONFORMITY

IPc

CALLVILLE LIMESTONE (Pennsylvanian) -- Medium to light gray, cherty, dolomitic limestones and dolomites; chert - white; medium to thick bedded; Fusulina; 164 m thick.

UNCONFORMITY

Mr

REDWALL LIMESTONE (Mississippian) --UNIT A: Pinkish gray, fine-grained, basal dolomite with interbedded limestones; abundant rugose corals and crinoids. UNIT B: Dark gray to light gray and brown, fine-grained, fossiliferous limestones; thin bedded, cherty, distinct hydrocarbon odor on fresh fracture; brachiopods, Fenestellid bryozoans, and crinoids. UNIT C: Light to medium brown, fine-grained sandstone; crossbedded; interbedded limestones; Lithostrontionella and Syringopora in limestone at top of formation; 471 m thick.

UNCONFORMITY

Dcf

COVE FORT QUARTZITE (Devonian) -- Light pink, pinkish gray, light brown, medium-grained quartzite; highly fractured and re-silicified; quartz grains can be seen on fresh and weathered surfaces; interbedded pinkish gray, fine-grained dolomite in middle of formation; 48.5 m thick.

Dg

GUILMETTE FORMATION (Devonian) -- Medium to dark gray to medium brown, fine-grained, sandy dolomite; few interbedded quartzite layers; 'twiggy' bodies and Coenites; 174.5 m thick.

Dsi

SIMONSON DOLOMITE (Devonian) -- Light gray to light brown, medium-to coarse-grained, 'sugary' dolomite; thinly laminated; thin bedded; 55.5 m thick.

Ds

SEVY DOLOMITE (Devonian) -- Very light gray to white, dense, micritic dolomite; very fine grained sandstone at top; fossiliferous shaley section 30 m from base. contains Cephalaspis fish fragments; medium to thick bedded; 216.5 m thick.

UNCONFORMITY

Ob

BLUEBELL DOLOMITE (Ordovician-Silurian) -- Dark gray, fine grained, cherty dolomite; algal mat stromatolite structures in chert; few rugose corals; 172.5 m thick.

THRUST

Cu

CAMBRIAN ROCKS UNDIVIDED -- Medium gray limestones and dolomites; Glossopleura in thin limestone and shaley units at base; 125 m thick.

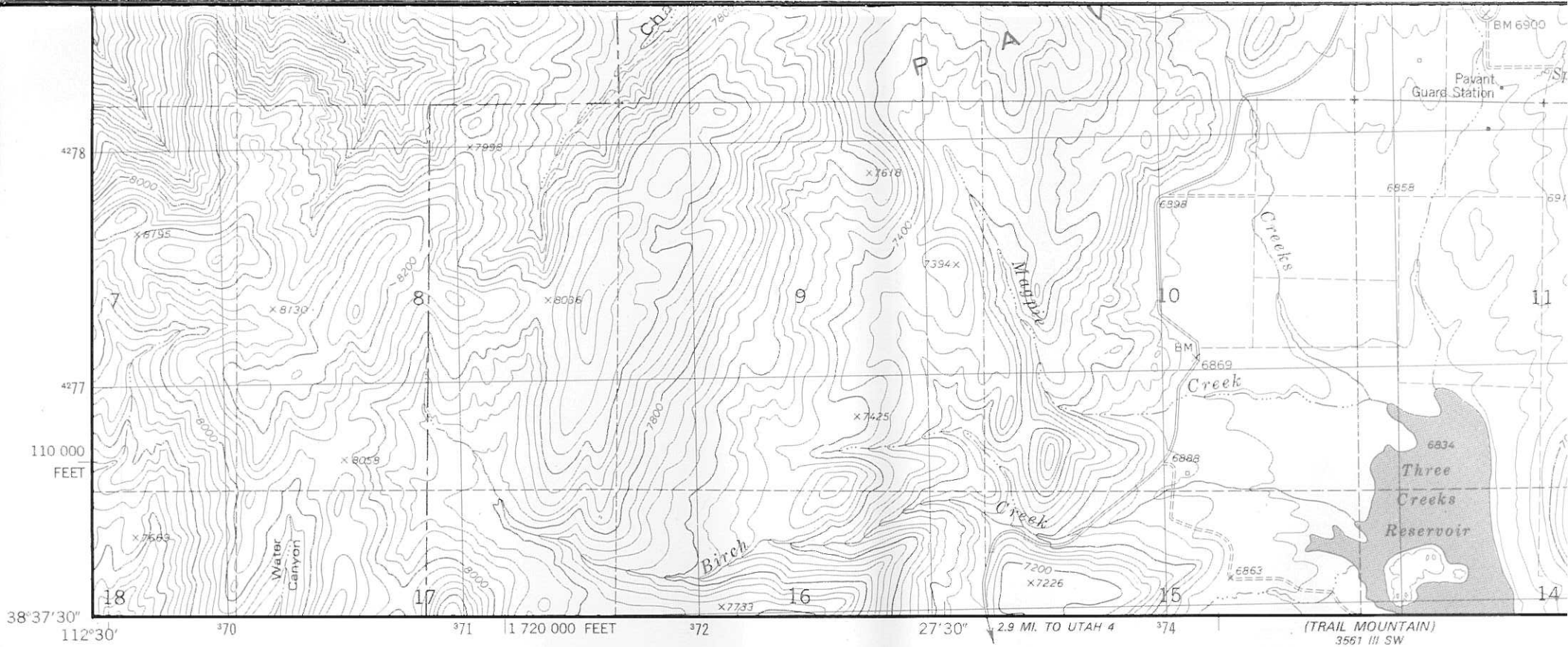
Cp

PIOCHE FORMATION (Cambrian) -- LOWER MEMBER: Olive green to greenish gray phyllitic shale; thin interbedded quartzites and dolomites; Skolithos tubes and worm burrows; 59 m thick. TATOW MEMBER: Mottled, bluish gray limestone; Chancelloria eros sponge spicules and trilobite fragments; greenish gray thin bedded, micaceous shale; ripplemarks and worm burrows; blue gray massive dolomite; weathers light brown; meringue weathering; 27.4 m thick.

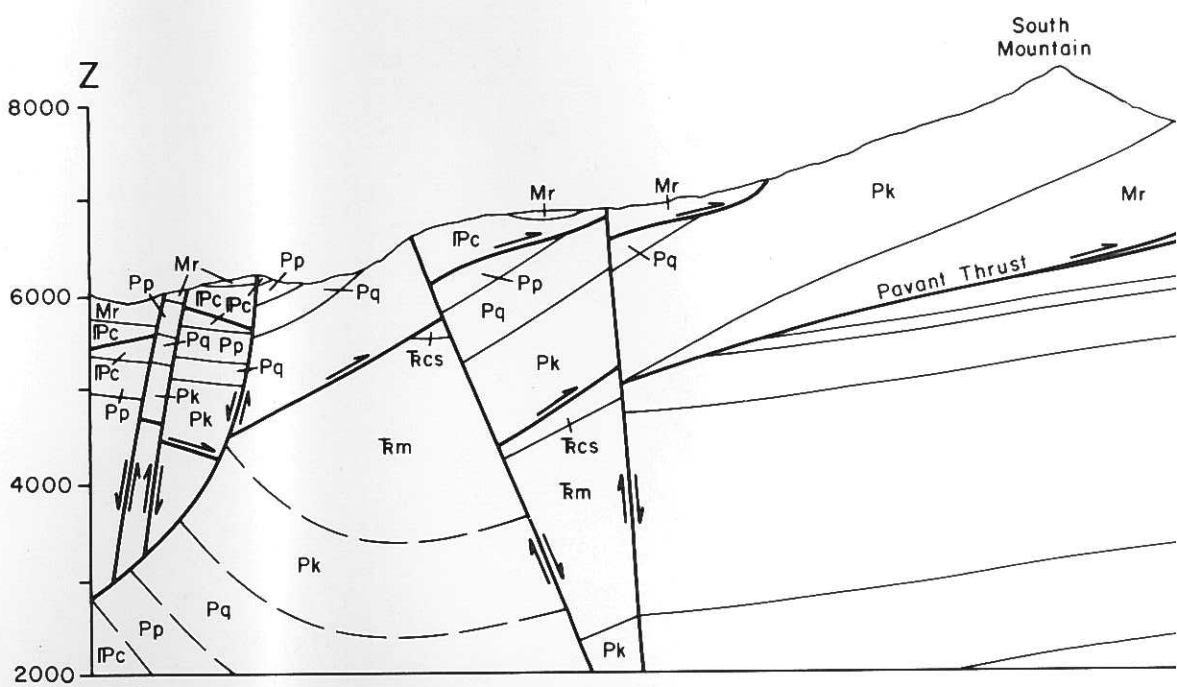
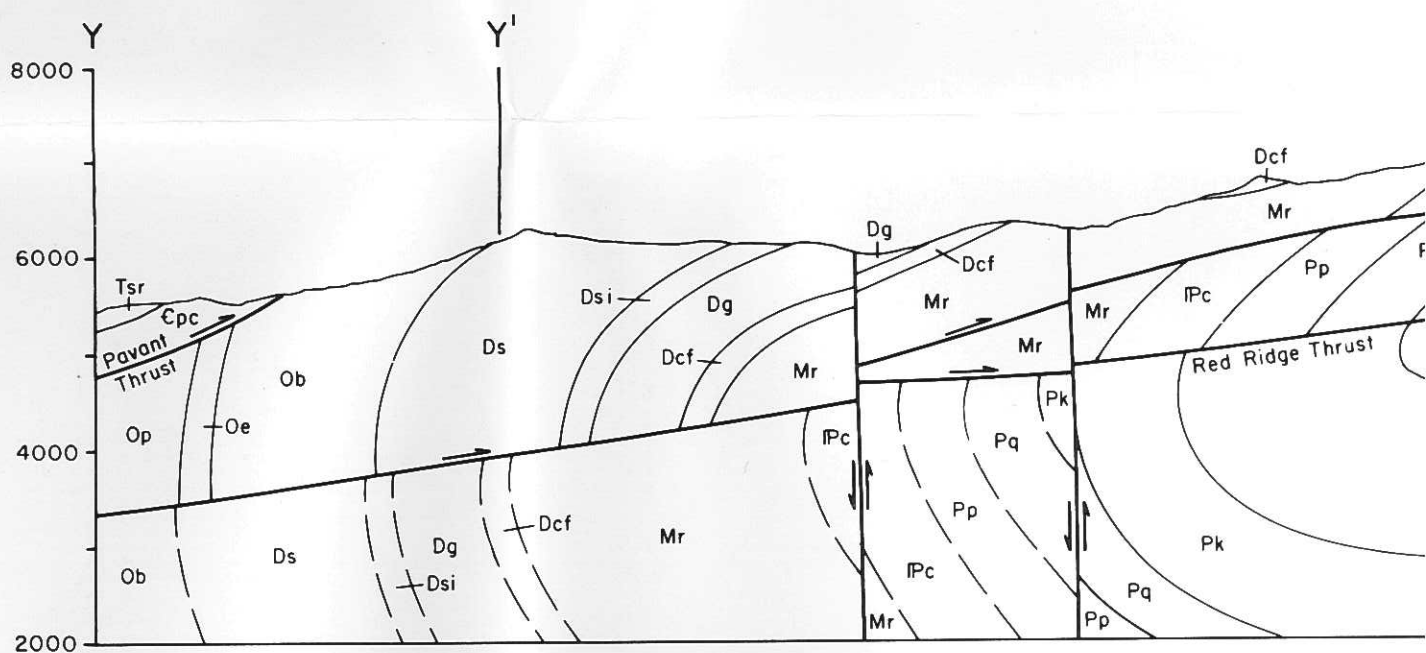
Ct

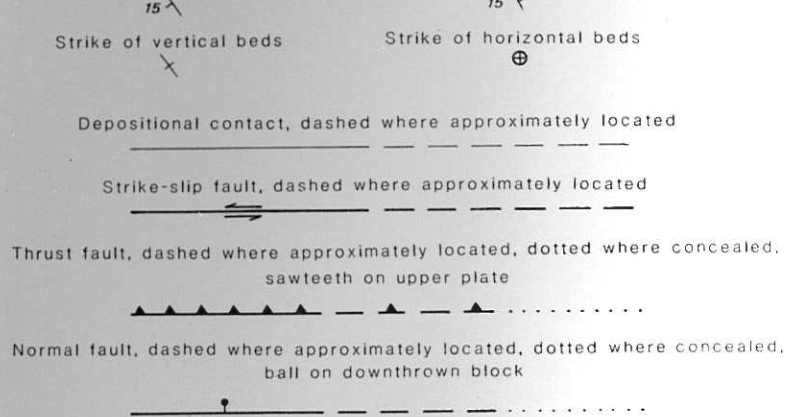
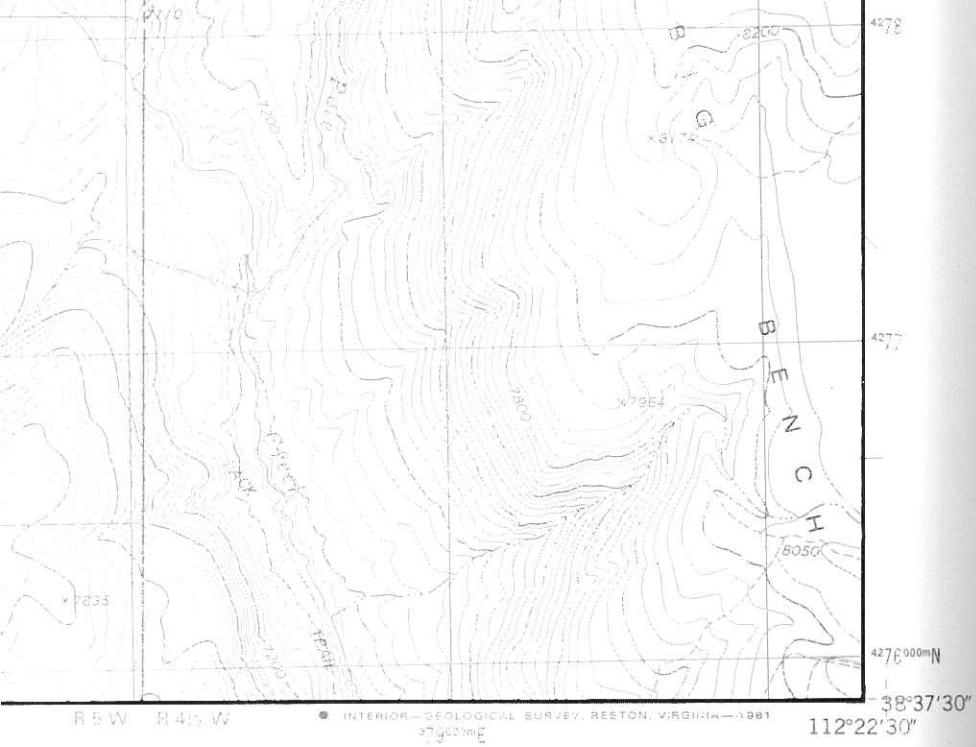
TINTIC QUARTZITE (Cambrian) -- White, light pink, and purple indurated quartzite; crossbedded; few thin lenticular pebble conglomerate layers; glauconite near the top; highly fractured and re-silicified; 172 m thick.





# Geology of Southern Pavant Mountains





CATION

# ge Area, ard County, Utah

